

YOUR GARDEN

Plowed As Never Before!

www.stevenchalmers.com

Buy 7/20/36



The GRAVELY Rotary Plow
Makes A Perfect Seedbed In One Operation

GRAVELY Gives You a Perfect Seedbed in 1 Operation!

Has This Happened To You?

Have you started to plant your supposedly plowed garden only to find it a nightmare of weed-choked soil, tangled roots, lumps and clods?

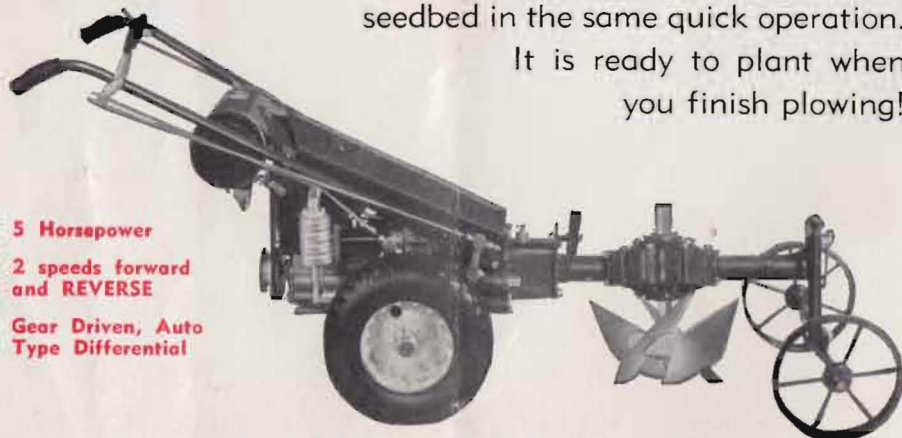
Yes, it happens every spring—your first enthusiasm is shattered by the drudgery of getting your soil into proper condition for planting.

Besides, if you must depend upon others to do this important work, chances are that they are either unable or unwilling to do the job when and how you know it should be done. If you garden for profit and hire your help, you still have the worry of seeing that the job is begun right.

A GRAVELY will end these worries,

because you can start the season right! You'll have a good, smooth, well-worked seedbed. The GRAVELY Power-driven Rotary Plow not only plows your garden—it makes a perfect seedbed in the same quick operation.

It is ready to plant when you finish plowing!



5 Horsepower

2 speeds forward and REVERSE

Gear Driven, Auto Type Differential

Model L GRAVELY with Power-Driven Rotary Plow



Here are three reasons why the GRAVELY Rotary Plow is Best

1

It's better for you—it means much less work in preparing the soil, in furrowing and cultivating. You can do the job exactly when it should be done—and in one-third the time.

2

It's better for the soil—ground prepared with the GRAVELY Rotary Plow will always absorb and conserve the moisture. Air and sunlight will penetrate and keep the ground from souring. All fertilizer and waste is mixed with the soil, enriching it.

3

It's better for the plants — soil prepared the GRAVELY way will give you better yields, stronger, sturdier plants.

"A Great Contribution to the Art of Soil Preparation"

Says P. G. Salom of Wayne, Pennsylvania:

"To my great amazement I found that I could do a perfect job in hard dry ground that I would have refused to plow with a mold-board plow, owing to the difficulty of breaking up the clods. This machine in my estimation is a great contribution to the art of soil preparation."

You can do a perfect job too—and you will have less weeds, bigger and better crops, and soil that is easily worked all summer long. Remember, the GRAVELY Rotary Plow doesn't make a dust fine seedbed, easily packed after a hard rain. Instead, you get a seedbed that is just the right consistency, neither too fine or too coarse. It's **just right!**

Plenty of Power

You have plenty of power because the GRAVELY Rotary Plow is a power-driven unit. It doesn't depend upon traction to operate. Instead, the full power of the engine is transmitted directly to the plow by steel shafts and gears. There are four cutter blades on a shaft that is turning at 200 revolutions a minute. This means that one of the cutting blades is biting into the soil 800 times a minute. You'll have a fine, level seedbed—but one that will not pack. You can plow more than an acre a day with the GRAVELY Rotary Plow. There is plenty of

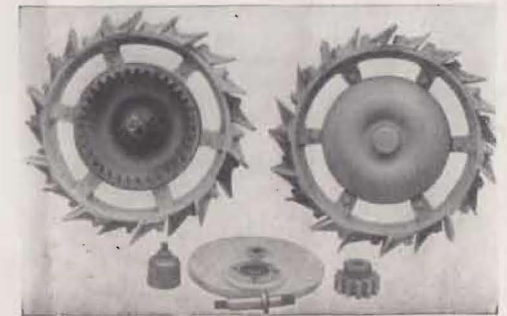
www.stevenchalmers.com



power in the GRAVELY 5 Horsepower Motor to plow in the heaviest sod. If you work in sod or unusually heavy soil constantly, we recommend Gear Reduction wheels. (Shown at the bottom of this page.) These wheels add weight to the Tractor, and are geared down until they triple the actual power of the plow and tractor.

Remember the GRAVELY Rotary Plow Will

- 1 Chop the ground as you plow, make a level, smooth seedbed—without further work!
- 2 Plow from 7 to 10 inches deep, depending upon soil conditions.
- 3 Cut a furrow from 8 to 10 inches wide, depending upon the soil conditions.
- 4 Cut up weeds, trash, cover crops, waste—and mix them thoroughly in the soil.



Gear Reduction Wheels

Easy to Use—

The GRAVELY Rotary Plow is easy to use. Many women have written us enthusiastic letters about the work they have been able to do with the GRAVELY. Notice in the letter reproduced on the next page that Mr. William C. Meyer of Fairhope, Alabama, has two young sons that do fine work with the GRAVELY. The method of using the Rotary Plow is simple. The GRAVELY is first driven down the center of the garden. Then you turn around and go back again with the right wheels in the furrow that has just been made, and so on until the garden is plowed. The plow throws the dirt to the right, against the dirt from the previous furrow. When you have finished, the entire seedbed is leveled off—smooth, clean and ready to plant. Attaching the plow to the tractor is no problem—simply place the four bolts in the proper holes and tighten. It only takes a moment.

Corkscrew Action

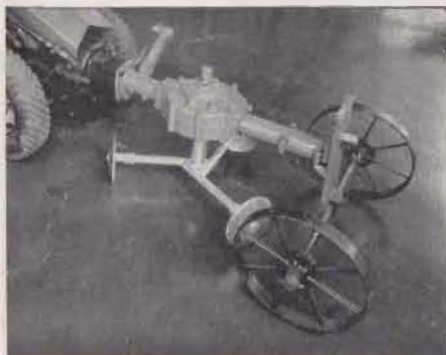
The unique corkscrew action of the plow chews into the soil and throws it to the right. Stones and

roots, unless they are large enough to interfere with a horsedrawn plow, will be thrown to the surface, or the roots cut up and mixed with the soil. The cutter blades are bent slightly at the tip, tend to strike a glancing blow. Rocks as big as twice the size of your doubled fist will slip easily through the cutters. **If you strike a rock or other large object big enough to halt operation, the GRAVELY Slip Clutch will stall your motor harmlessly. This protects both Attachment and Tractor.**

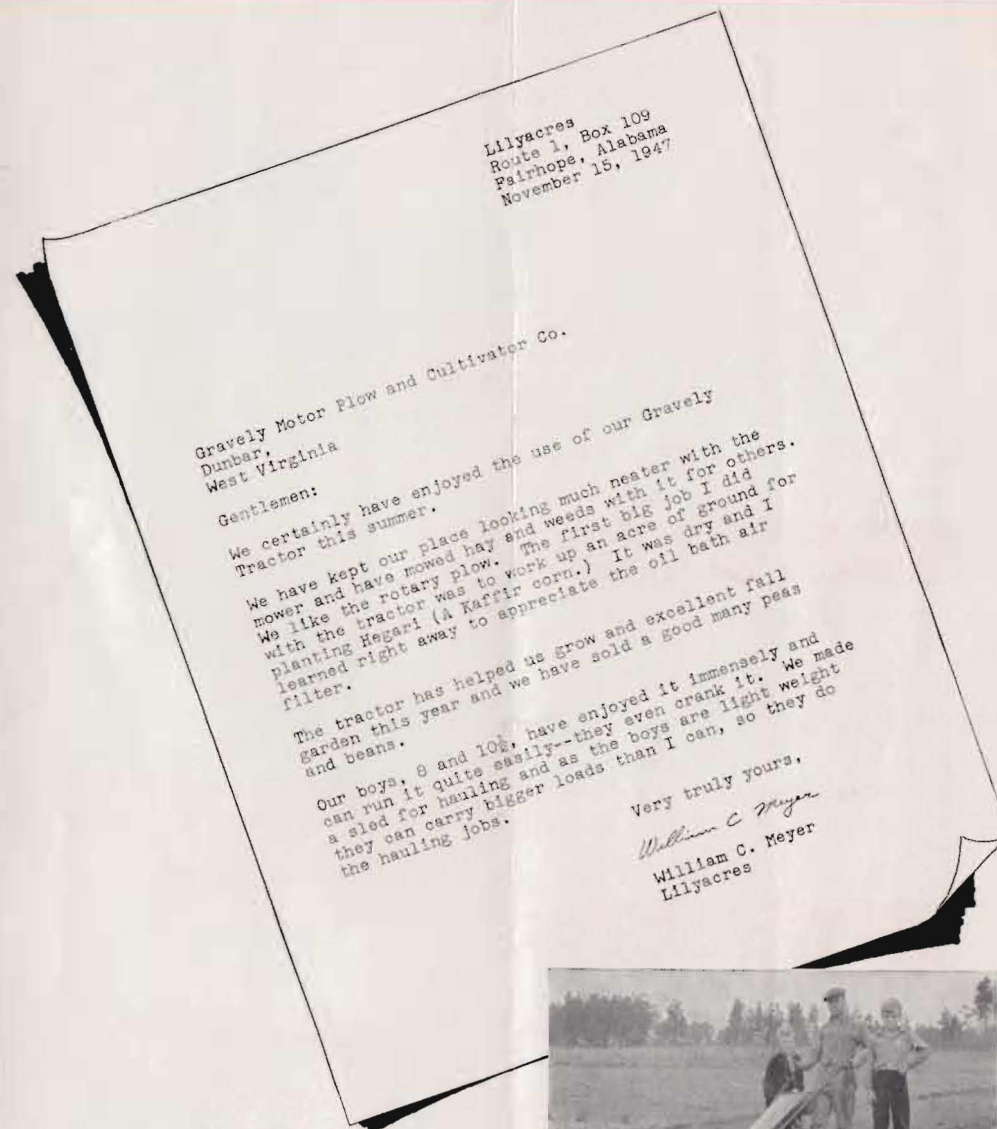
Rotary Cultivator

The GRAVELY Rotary Cultivator is a power cultivating attach-

ment. This consists of small sturdy discs that rotate on their axles as the entire assembly spins. The soil between the rows of plants is cut up, leaving it just right for the proper conservation of moisture. Even the weeds are chopped up and mixed with the soil. The Rotary Cultivator fits your Rotary Plow Attachment.



A USER SAYS—



Liliyacres
Route 1, Box 109
Fairhope, Alabama
November 15, 1947

Gravelly Motor Plow and Cultivator Co.
Dunbar,
West Virginia
Gentlemen:

We certainly have enjoyed the use of our Gravelly Tractor this summer.
We have kept our place looking much neater with the mower and have mowed hay and weeds with it for others. We like the rotary plow. The first big job I did with the tractor was to work up an acre of ground for planting Hegari (A Kaffir corn.) It was dry and I learned right away to appreciate the oil bath air filter.

The tractor has helped us grow and excellent fall garden this year and we have sold a good many peas and beans.
Our boys, 8 and 10, have enjoyed it immensely and can run it quite easily--they even crank it. We made a sled for hauling and as the boys are light weight they can carry bigger loads than I can, so they do the hauling jobs.

Very truly yours,
William C Meyer
Liliyacres



**A GRAVELY
Rotary Plow
Takes Away the Drudgery of Soil Preparation!**

The GRAVELY is more than a plow 19 attachments to solve all your problems

Plowing your garden is only one of many jobs you can do with a GRAVELY. It takes less than 5 minutes to remove the plow and attach any of the eighteen other attachments to solve your upkeep, gardening and maintenance problems. Cultivator, Sickle Mower, Rotary Mower, Roller, Sprayer, Hay Rake, Seeder, Transportation Cart, Power Take-Off . . . all of these are designed for the GRAVELY and manufactured by the GRAVELY COMPANY.



**Gravely Tractor With the
Power-Driven Gang Mowers**

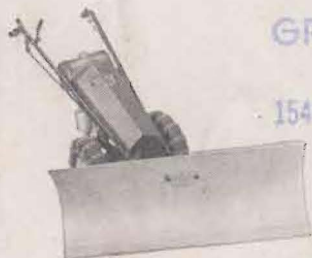
Like our product you will find our sales policy better than the usual. You are not asked to buy a machine without first being shown what it will do on your own ground and under your own conditions. Without obligating you in the least we will be glad to arrange for a representative to visit you and to quote prices on the equipment needed to do your work. Our machine is sold and serviced through dealers. You will find GRAVELY Dealers qualified to give service on machines they sell.

Manufactured by

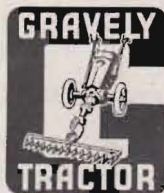
GRAVELY Motor Plow and Cultivator Company
DUNBAR, WEST VIRGINIA

Sold by

GRAVELY CANADIAN, INC.
SALES and SERVICE
1544-A Avenue Road, Toronto 12, Canada
Telephone MAYfair 5421



Snow Plow



PRINTED IN U.S.A.